

Weave Square

Level: Medium to advanced.

Materials: medium weight yarn (4), hook size between 4 mm and 5.5 mm

Legend:

ch = chain

dc = double crochet

ss = slip stitch

2-ch space = space formed by 2 chains in a row

3-ch space = space formed by 3 chains in a row

To begin: 16 ch. (see image 1)

Row 1: 1ch, turn, [(1sc, 2ch, 4dc) into 1st ch from hook, skip 3ch] repeat 3 times, ss into the last ch.

Row 2 - 7: 4ch, turn, [(1sc, 2ch, 4dc) into 2ch-space from previous row] repeat 3 more times.

Row 8: 4ch, turn, [(1sc, 2ch, 4dc) into 2ch-space from previous row] repeat 3 more times, (3 dc in same 2-ch space to form a corner).

Last row (around the perimeter of the whole square): do not turn; continue to side A (see image 2):

(Side A) 1sc into the top of the dc that sticks out the most to the outside, [3 dc into the indented 2ch-space, 1sc into the top of the dc that sticks out the most to the outside] repeat 2 times, 4dc into the indented 2ch-space, 2 sc into the top dc. Continue on to Side B.

(Side B) [3 sc into 3-ch space, 1 sc into next stitch] repeat 3 more times. Continue on to Side C.

(Side C) 1sc into the 16thch of the Side B, 1sc into the top of the dc that sticks out the most to the outside, [3dc into the indented 2ch-space (next after the dc that sticks out the most to outside), 1sc into the top of the dc that sticks out the most to the outside] repeat 3 times, 4dc into the indented 2ch-space (next after the dc that sticks out the most to outside). Continue on to side D.

(Side D) 1sc into the top of the dc that sticks out the most to the outside, [2dc into the indented 2ch-space of row 8, 1sc into the top of the dc that sticks out the most to the outside] repeat 3 times, ss into a dc of previous row (see image 2).

(Optional additional row: sc around the square, crochet 3sc into each corner stitch.)

Finish off.

Image 1

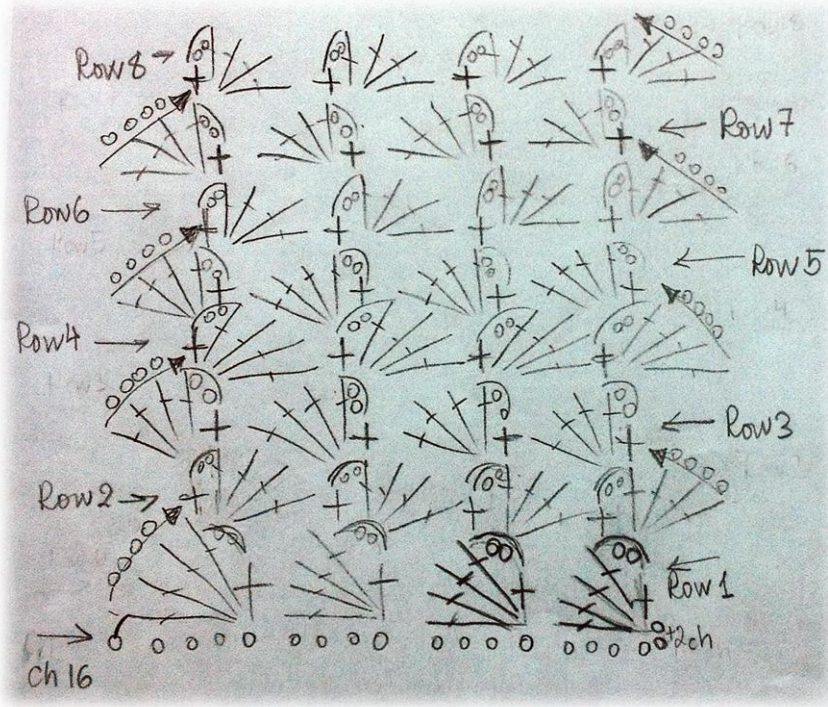


Image 2

